



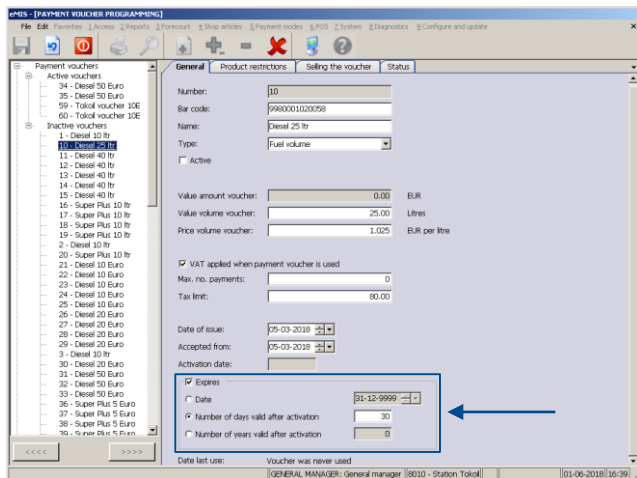
Tokheim Fuel POS[®]

Release notes
Version 49



Extension payment vouchers

Using eMIS or the back office interface, it is possible to program payment vouchers in Fuel POS that can afterwards be used indoor and outdoor as method of payment. Three different enhancements are available in this module.



- A new method has been created to set the expiry date of a voucher. Previously it was only possible to set a fixed date. By entering a number of days (or years), the real expiry date will depend on when the voucher is activated. This is to avoid that a voucher expires for instance already before it is sold to a customer.
- The number of expired vouchers (and corresponding amount/volume) has been added to the day report.
- The site manager can launch a journal query to search information of one specific voucher.

Report enhancement

The shift, day, month and year reports include sections providing sales data per product family, per VAT rate and per method of payment. Additional information has been added to these sections.

| SALES PER GROUP CODE, VAT RATE AND METHOD OF PAYMENT | | | | | | | | |
|--|-------------|-------|----------|--------|--------------|---------|-----------|---------|
| Code | Description | VAT % | Quantity | Cash | Local credit | Cards | Other MOP | Total |
| 3 | Diesel | 21.00 | 2810.23 | 780.21 | 317.35 | 2448.91 | 292.00 | 3838.47 |
| 18 | Sandwich | 6.00 | 35.00 | 9.00 | 3.00 | 36.00 | 4.50 | 52.50 |
| 18 | Sandwich | 21.00 | 27.00 | 6.00 | 1.50 | 18.00 | 15.00 | 40.50 |
| | | | + | | | | | |
| | | 6.00 | | 9.00 | 3.00 | 36.00 | 4.50 | 52.50 |
| | | 21.00 | | 786.21 | 318.85 | 2466.91 | 307.00 | 3878.97 |
| | | | + | | | | | |
| | | | | 795.21 | 321.85 | 2502.91 | 311.50 | 3931.47 |

Three different product families are supported:

- Group codes
- Extended group codes
- Report codes

| SALES PER PRODUCT ID., VAT RATE AND METHOD OF PAYMENT | | | | | | | |
|---|-------|----------|--------|--------------|---------|-----------|---------|
| Product id. | VAT % | Quantity | Cash | Local credit | Cards | Other MOP | Total |
| Fuel | 21.00 | 2810.23 | 780.21 | 317.35 | 2448.91 | 292.00 | 3838.47 |
| Shop C7 | 6.00 | 35.00 | 9.00 | 3.00 | 36.00 | 4.50 | 52.50 |
| Shop C7 | 21.00 | 27.00 | 6.00 | 1.50 | 18.00 | 15.00 | 40.50 |
| | | | + | | | | |
| | 6.00 | | 9.00 | 3.00 | 36.00 | 4.50 | 52.50 |
| | 21.00 | | 786.21 | 318.85 | 2466.91 | 307.00 | 3878.97 |
| | | | + | | | | |
| | | | 795.21 | 321.85 | 2502.91 | 311.50 | 3931.47 |

A new line with total values has been added to these report sections.

| SALES PER REPORT CODE, VAT RATE AND METHOD OF PAYMENT | | | | | | | |
|---|-------|----------|--------|--------------|---------|-----------|---------|
| Report code | VAT % | Quantity | Cash | Local credit | Cards | Other MOP | Total |
| Diesel | 21.00 | 2810.23 | 780.21 | 317.35 | 2448.91 | 292.00 | 3838.47 |
| Sandwich | 6.00 | 35.00 | 9.00 | 3.00 | 36.00 | 4.50 | 52.50 |
| Sandwich | 21.00 | 27.00 | 6.00 | 1.50 | 18.00 | 15.00 | 40.50 |
| | | | + | | | | |
| | 6.00 | | 9.00 | 3.00 | 36.00 | 4.50 | 52.50 |
| | 21.00 | | 786.21 | 318.85 | 2466.91 | 307.00 | 3878.97 |
| | | | + | | | | |
| | | | 795.21 | 321.85 | 2502.91 | 311.50 | 3931.47 |

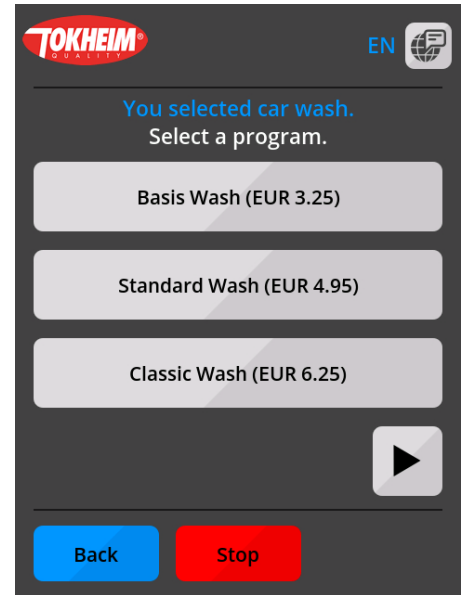
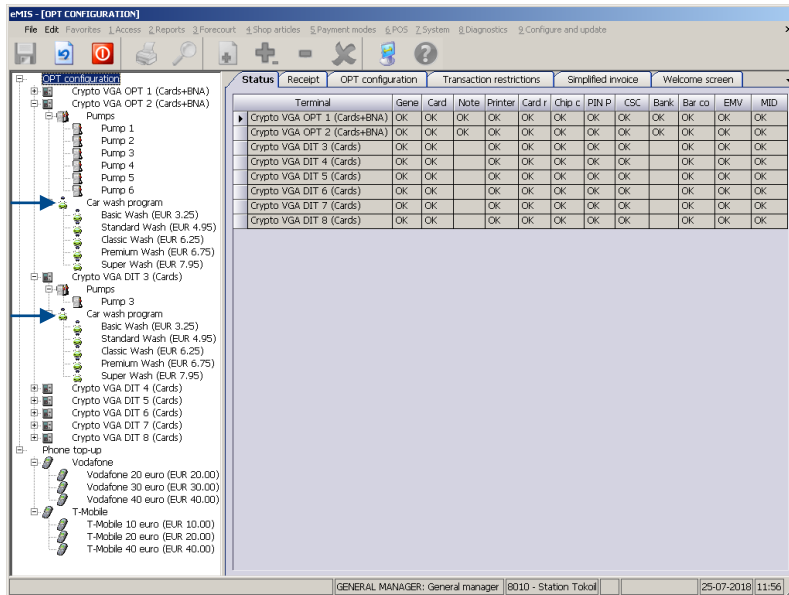
Cross checks with other sections already providing total values will become easier.

Car wash integration

When a car wash interface has been enabled in Fuel POS, then car wash programs can be sold both indoor and outdoor. The site manager defines which car wash programs are sold outdoor via the Crypto VGA.

Where previously the same configuration applied to all Crypto VGA terminals, the site manager can now define a separate list of car wash programs per individual Crypto VGA.

This new option will allow to configure for instance 1 car wash item per Crypto VGA in sites where there is a Crypto VGA per washing position. Buying the car wash program can as such automatically launch the washing program.



France – Cartadis car wash interface



A new car wash interface “Cartadis” is available in France.

- Where most car wash interfaces that were integrated in Fuel POS are based on a serial connection, this new interface is based on web services.
- Car wash sales are facilitated both indoor via Fuel POS and outdoor via the Crypto VGA.
- The validity period which is applied on the car wash programs, is set by programming a validity period in Fuel POS.

Car wash

Car wash:

Print car wash bar code

Car wash serial number:

Validity: Days

Visualization PCI Point-to-Point status

A new option has been added in eMIS to comply with the PCI requirement that a merchant needs to be able to verify the “PCI Point-to-Point” status of each terminal. This includes both the indoor PIN Pads connected to Fuel POS and the Crypto VGA outdoor payment terminals.

- The “PCI Point-to-Point” status overview has been added to the eMIS window already providing the Fuel POS software version information.
- The actual status needs to match with the information as listed on the PCI website.
- The Crypto VGA status overview is also printed on the outdoor configuration ticket to meet the requirement for unmanned sites.

| Terminal | PCI property |
|-----------------|--------------------------|
| POS-01 Pinpad | |
| -- COMPANY NAME | CCV Deutschland GmbH |
| -- PRODUCT NAME | VXE29 |
| -- Firmware | QT080500 |
| -- Applic | VXSEC 11.52c |
| -- SerialNo | 325-214-839 |
| -- Sred status | Active |
| -- White-list | 0002 |
| OPT-01 | |
| -- COMPANY NAME | Tokheim Nederland B.V. |
| -- PRODUCT NAME | Crypto VGA 2.1 |
| -- Hardware | Crypto VGA 2.1 |
| -- Firmware | Crypto 126 SRED v2.0 |
| -- Applic | Crypto VGA APP SRED v2.1 |
| -- SerialNo | 11821373 |
| -- Sred status | Active |
| -- White-list | 7 |

Germany – WEAT



Many sites in Germany have an on-line link with WEAT. WEAT is a company providing card payment services and communication network services to about 1500 fuel stations in Germany.

The WEAT batch protocol was updated from R6 to R7, and included a migration to the use of XML files. Fuel POS release 49 supports the latest WEAT R7 protocol.

After installation of release 49, the Fuel POS will login once to the WEAT host using a R6 dialogue but indicating that it switches to R7.